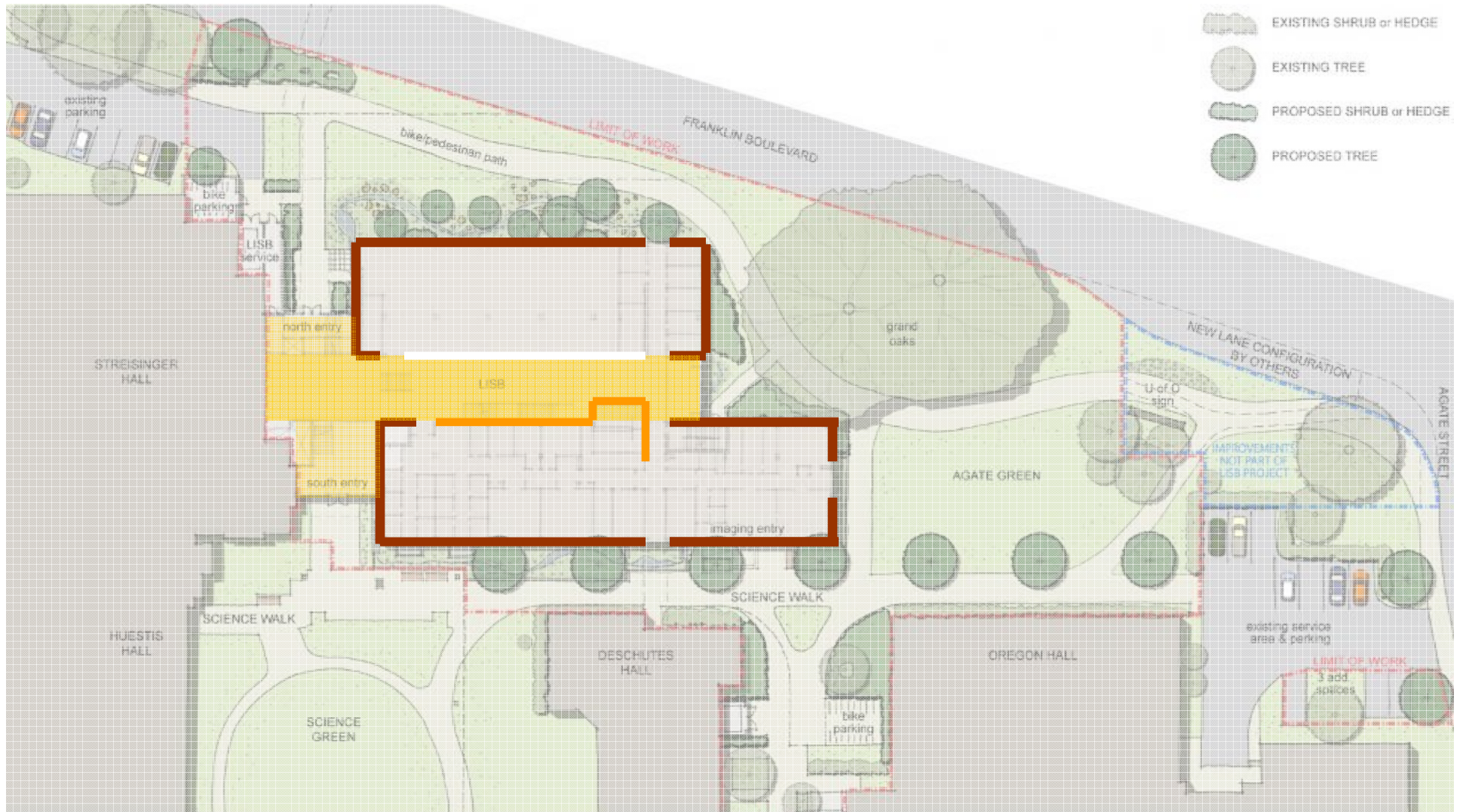






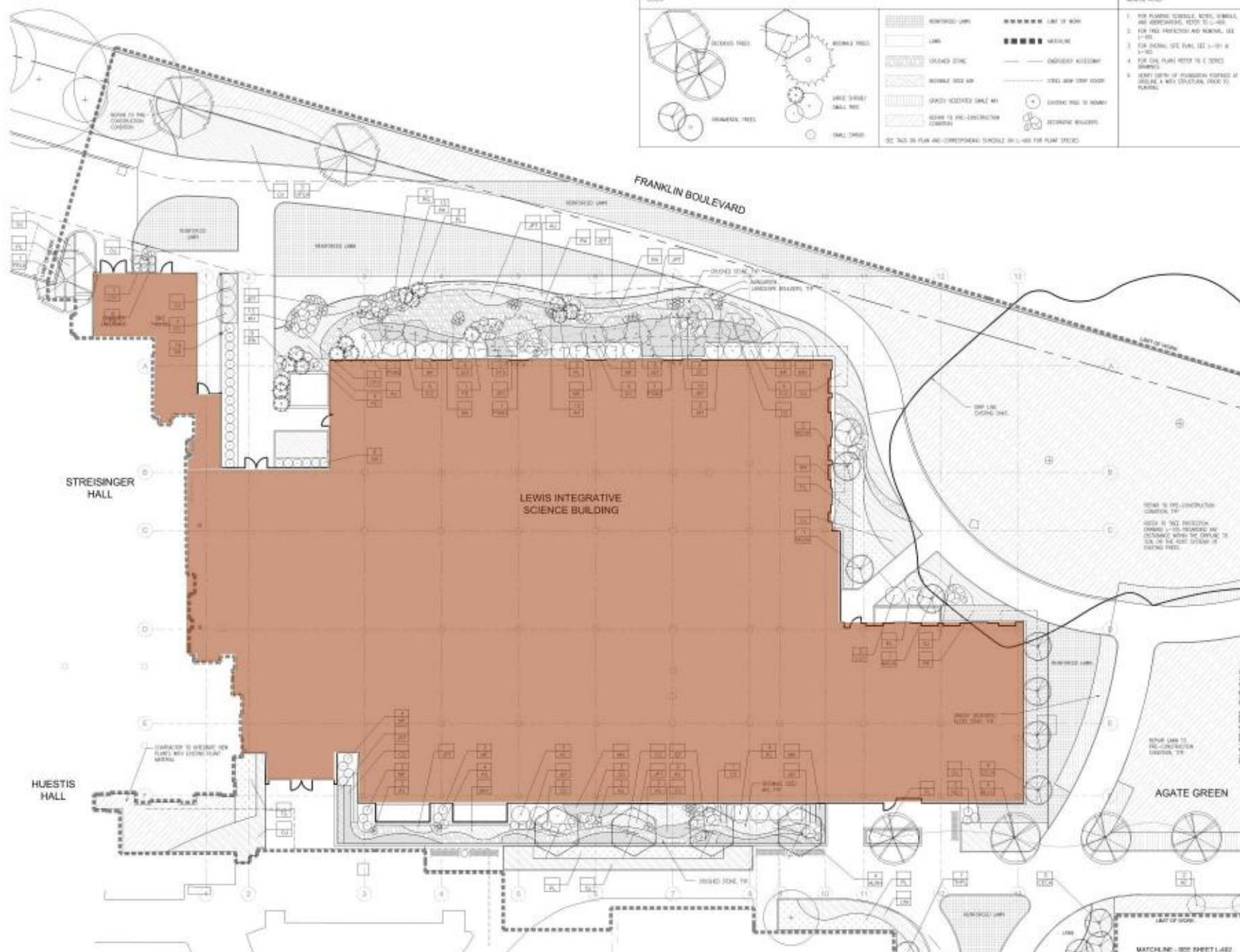


UO Lewis Integrative Science Building



-  EXISTING SHRUB or HEDGE
-  EXISTING TREE
-  PROPOSED SHRUB or HEDGE
-  PROPOSED TREE

LIMIT OF WORK
TO EXTEND SOUTH TO 15TH AVE



LEGEND	IDEAS, NOTES
REDWOOD TREE MAPLE TREE LARGE STREET SMALL TREE ORNAMENTAL TREE SMALL TREE	<ol style="list-style-type: none"> FOR PLANNING SCHEDULE, NOTES, SYMBOLS, AND APPROPRIATIONS, REFER TO L-402. FOR TREE PROTECTION AND REMOVAL, SEE L-102. FOR GENERAL SITE PLAN, SEE L-101 & L-102. FOR CIVIL PLAN, REFER TO C-3000 (DWG). IDENTIFY DEPTH OF PROTECTION FORMED BY SEE PLAN & MEASUREMENT FROM EDGE TO PLANTING.
REINFORCED LAWN LAWN GRADED STONE NORMAL TREE AREA OPENLY REVEALED SAMPLE AREA STONE TO PRE-CONSTRUCTION CONDITION LINE OF WORK MATERIAL GRADED ACCESSWAY STEEL AND STEEL JOIST EXISTING TREE TO REMAIN RETAINING WALL/RETAIN	<p>REFER TO PRE-CONSTRUCTION CONDITION, TP.</p> <p>DEPTH IS TREE PROTECTION FORMED BY SEE MEASUREMENT FROM EDGE TO PLANTING TO SEE ON THE ABOVE SYSTEMS OF EXISTING TREE.</p> <p>WHILE CASE TO PRE-CONSTRUCTION CONDITION, TP.</p>
<p>SEE THIS PLAN AND CORRESPONDING SCHEDULE ON L-402 FOR PLANT SPECIES.</p>	<p>MATCHLINE - SEE SHEET L-402.</p>



View Looking North



South Entry



South Entry



View Looking West



View Looking South West



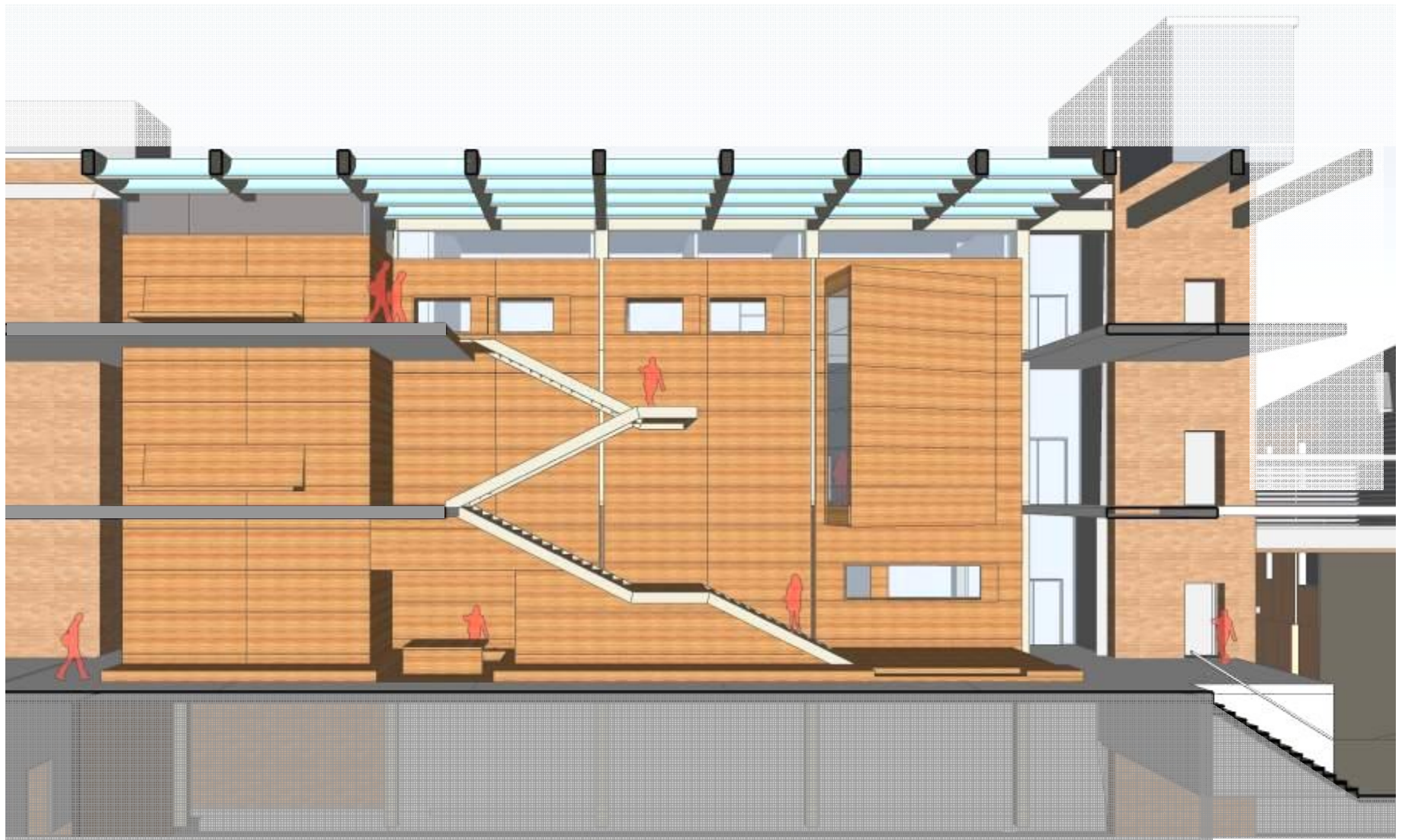
North Entry



Interior Development







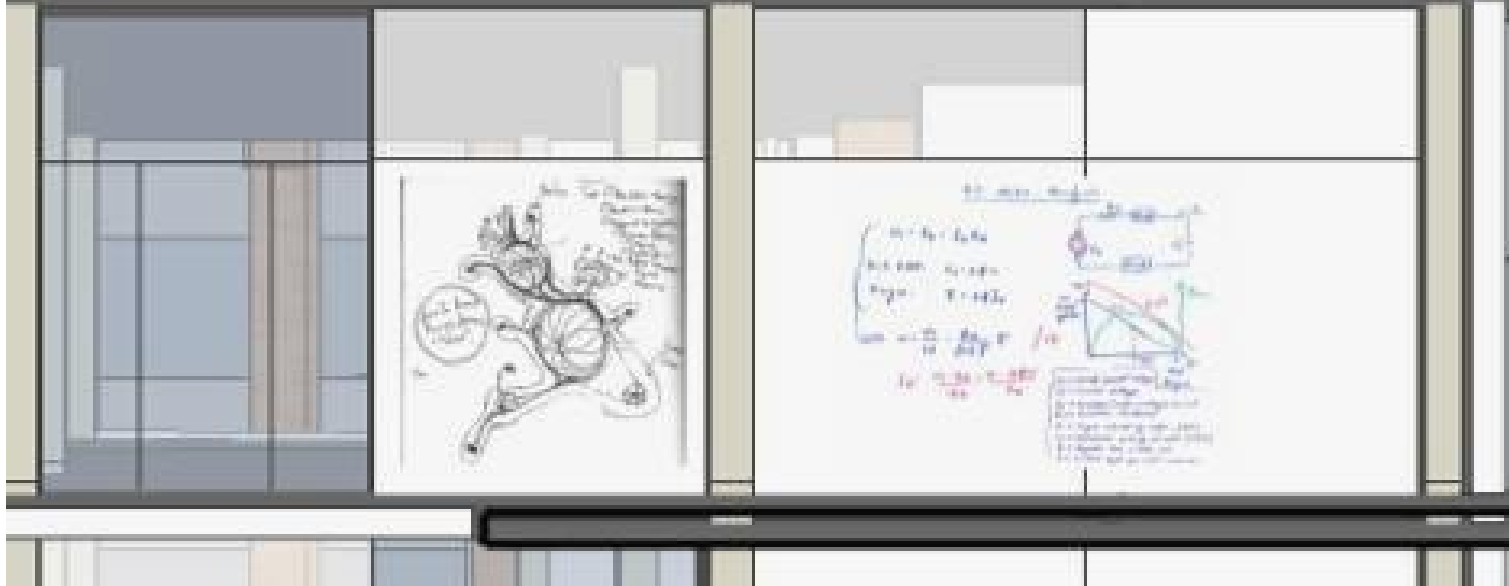
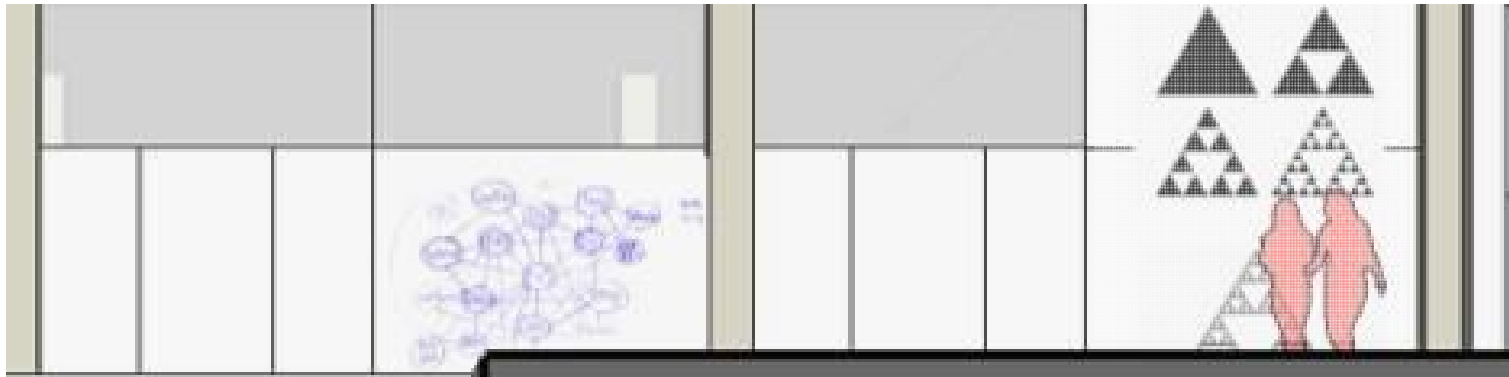






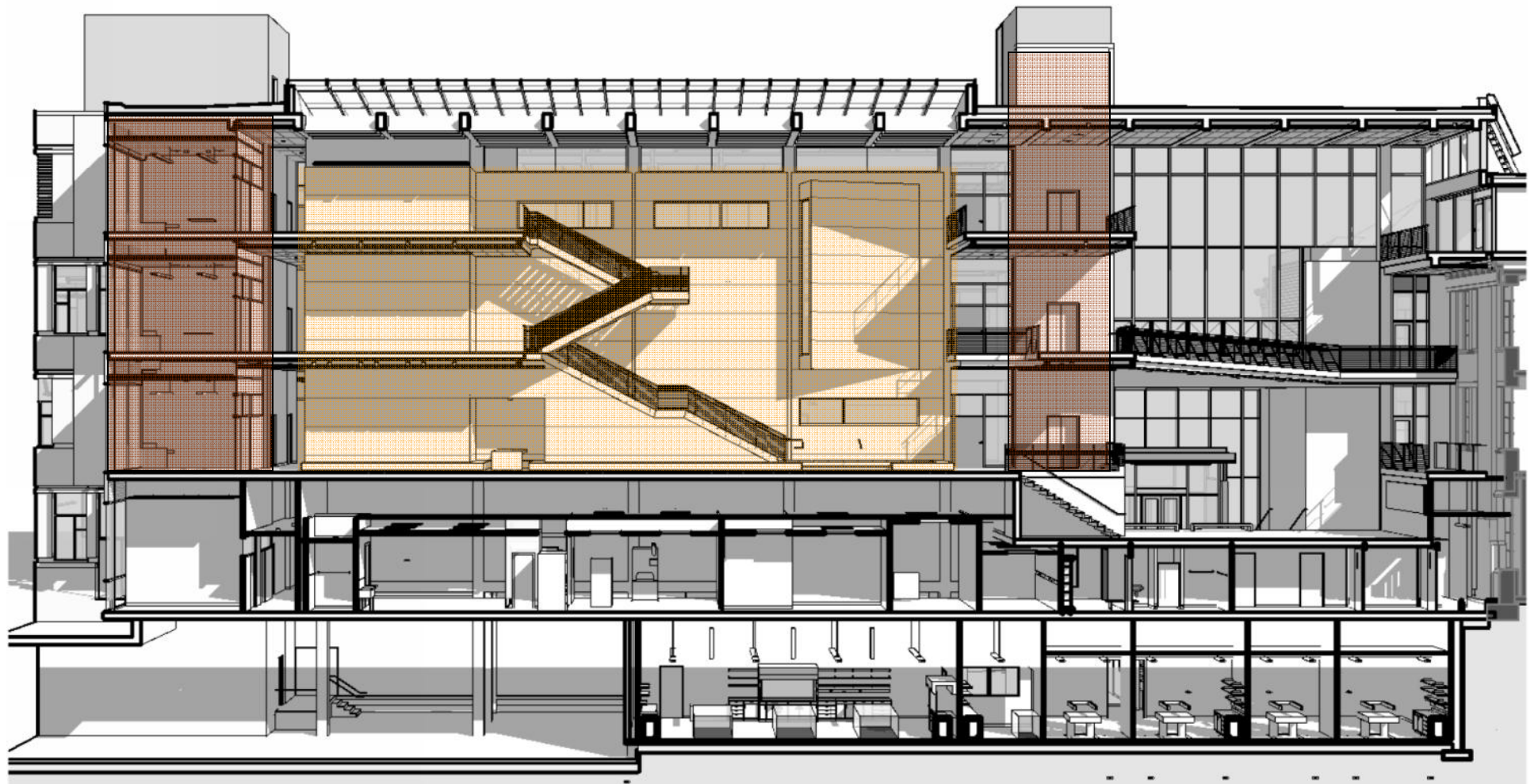








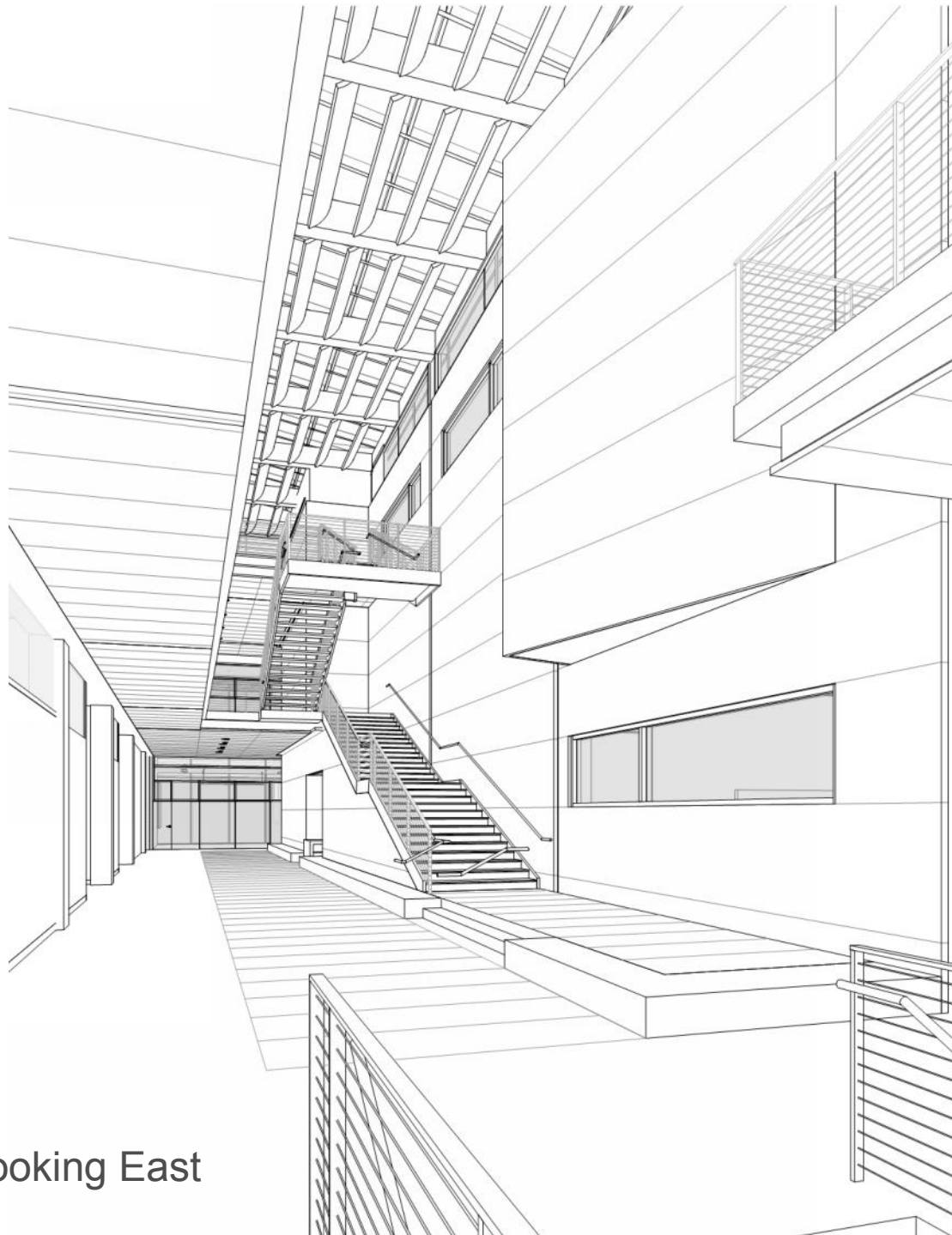
Up & Over Looking West



Atrium Looking South



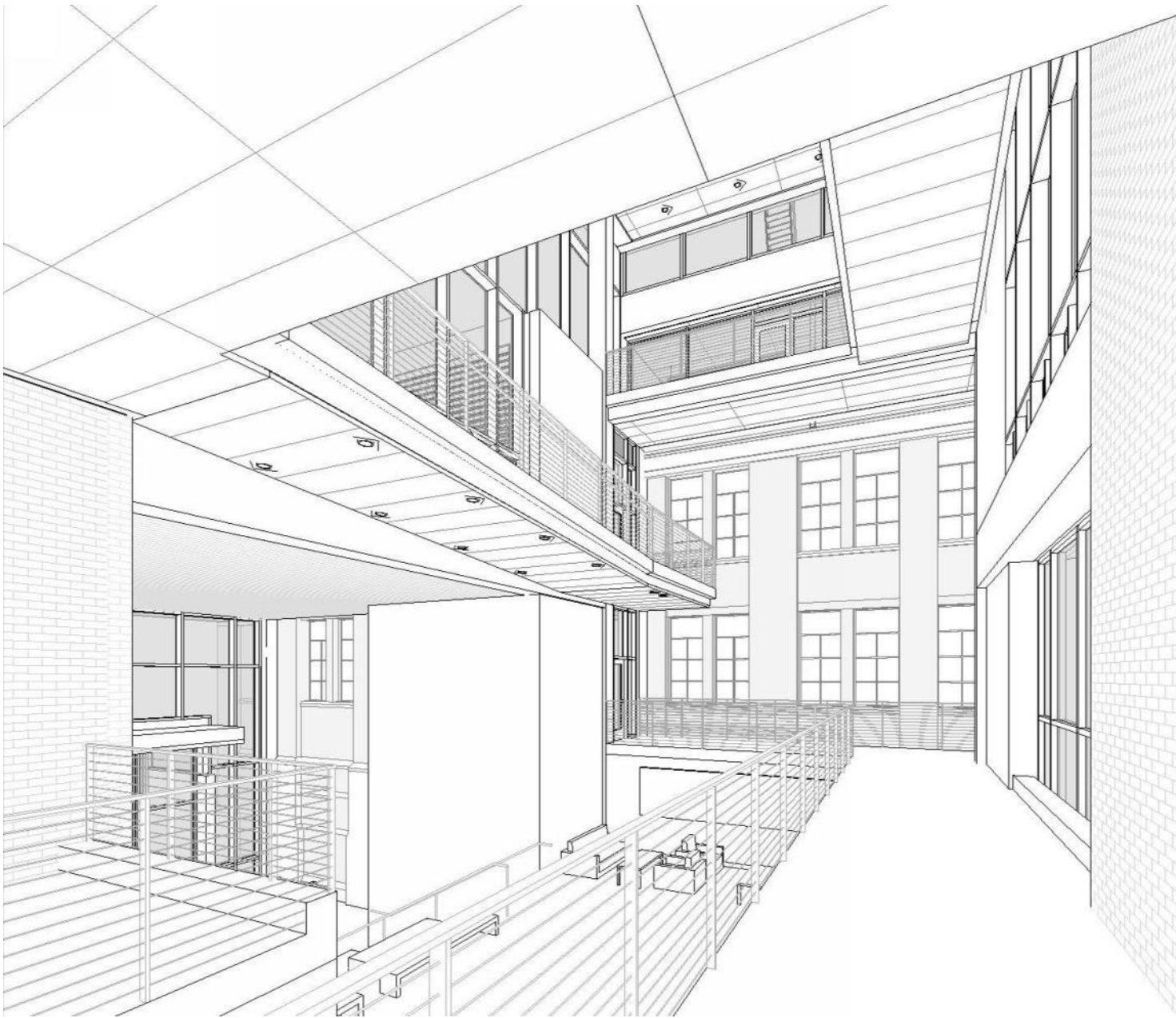
South Lobby



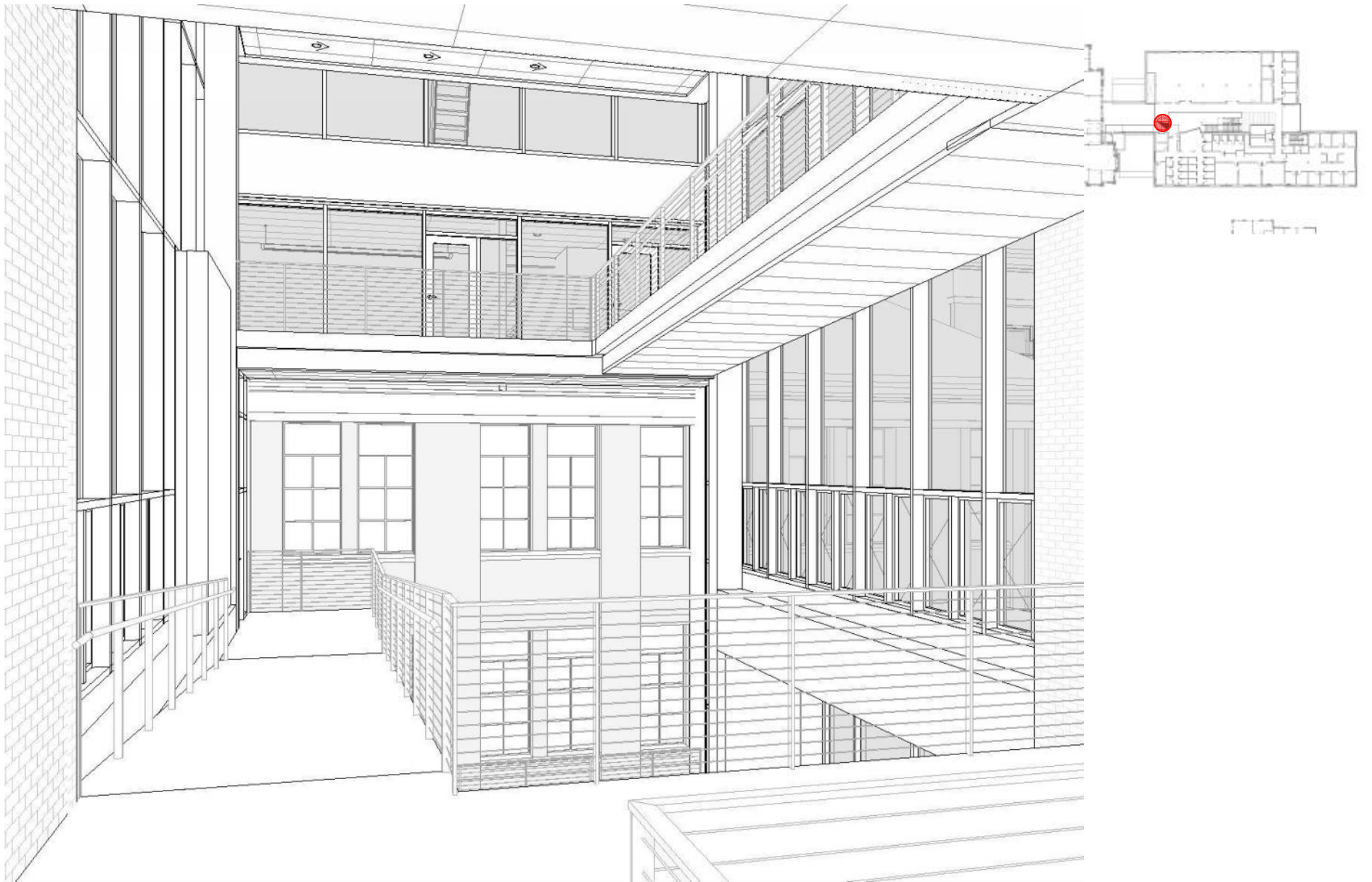
Atrium Looking East



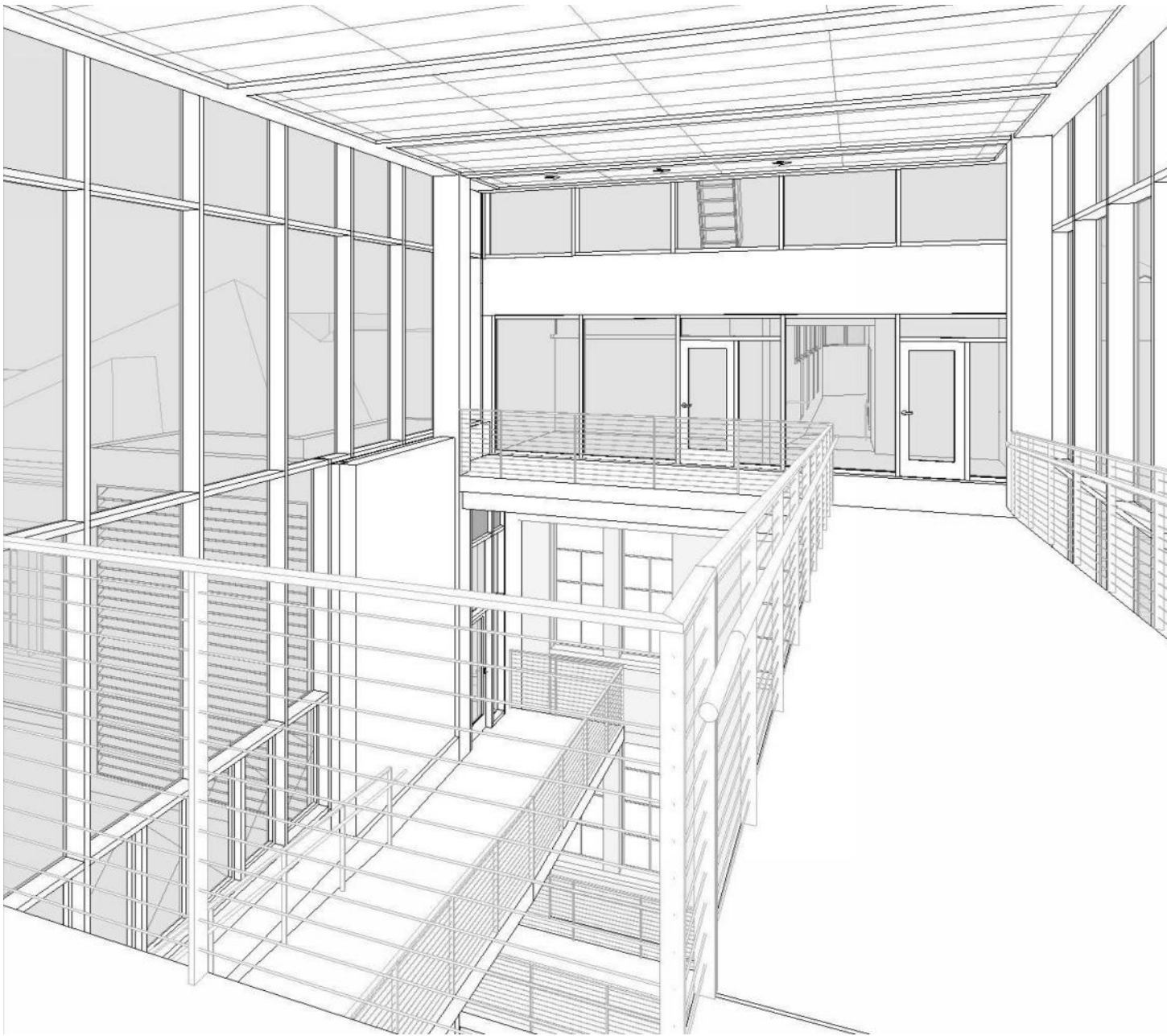
Atrium Looking West



Atrium Looking West – 2nd Floor

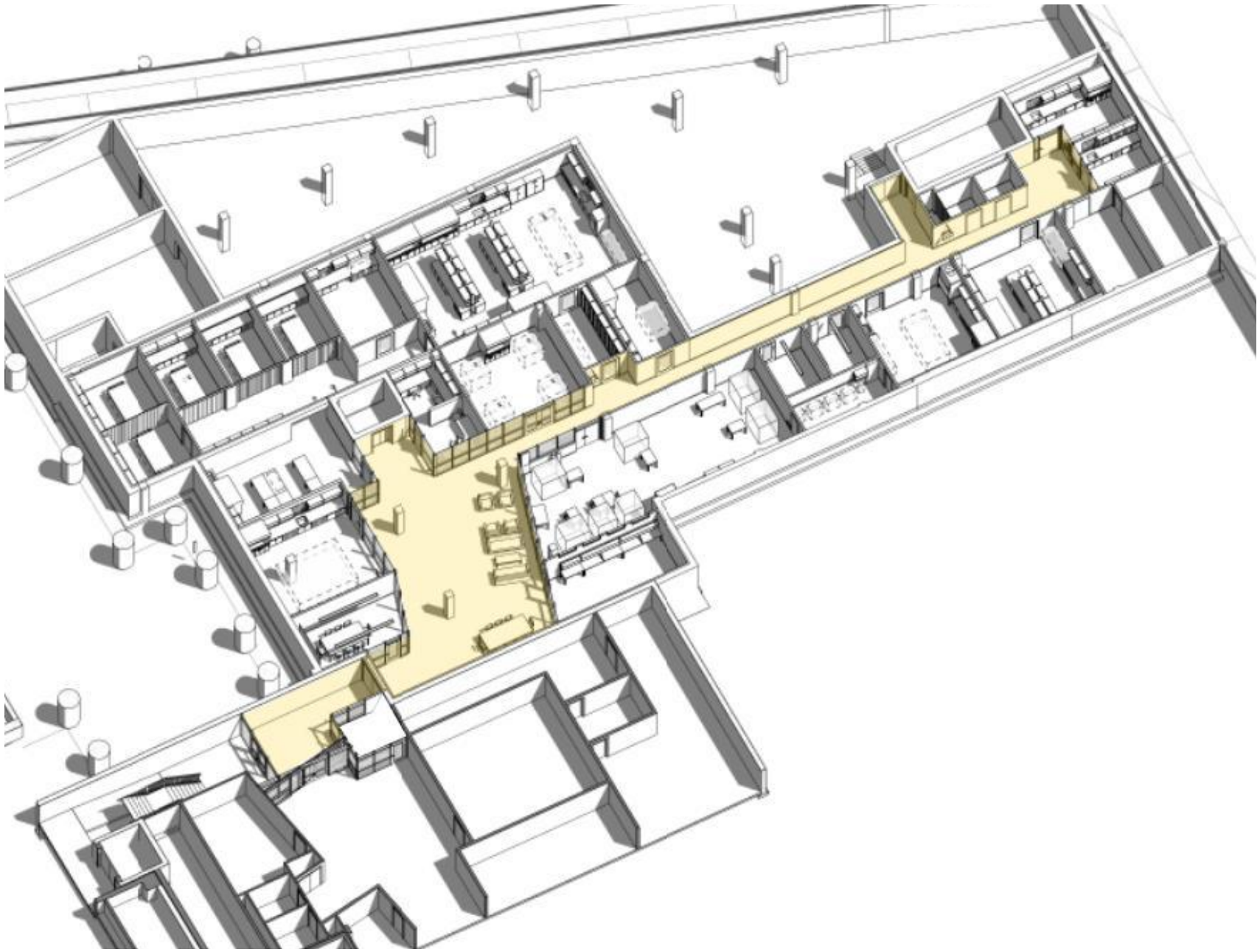


Atrium Looking West – 3rd Floor



4th Floor

Atrium Looking West – 4th Floor

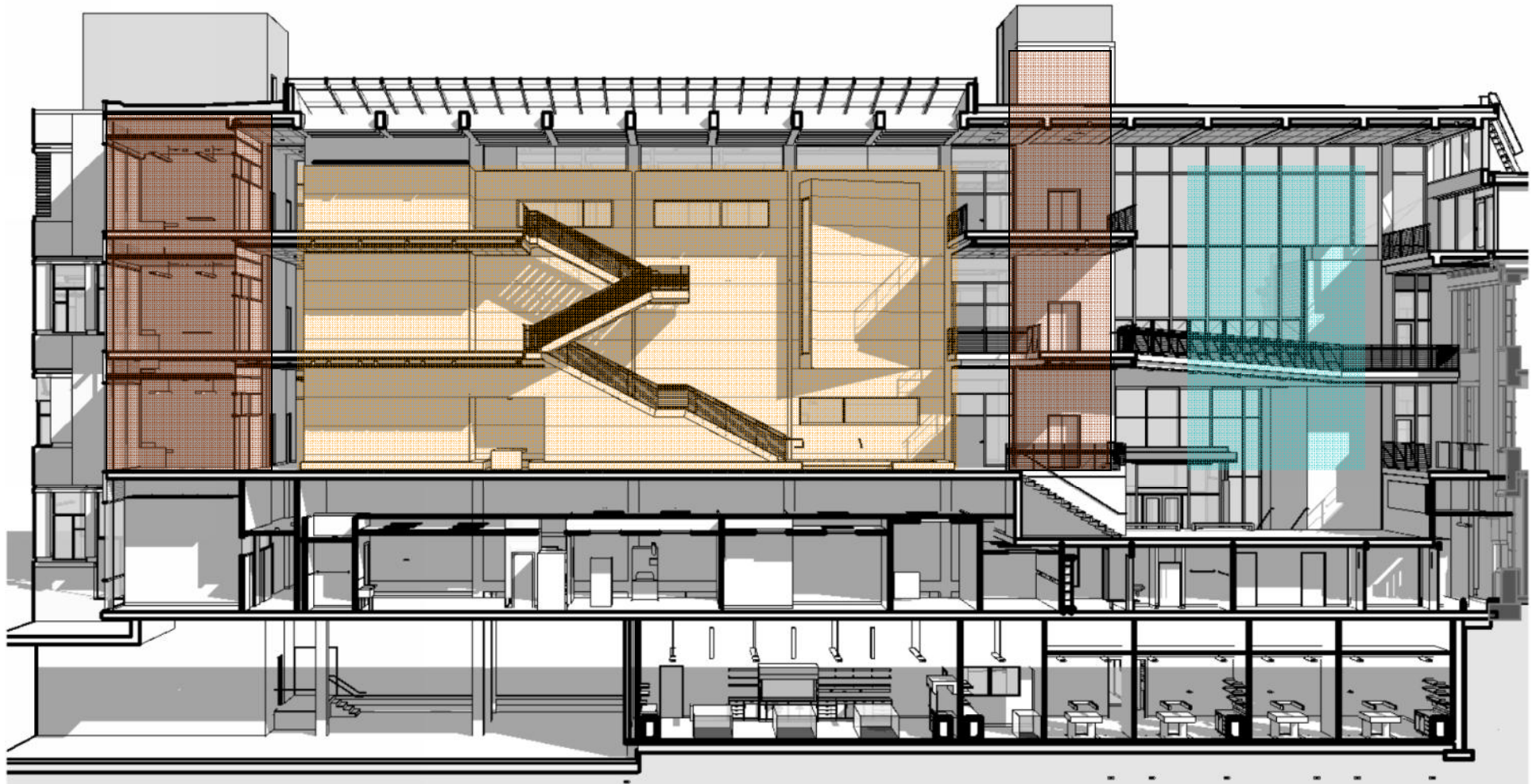


Basement- Instrumentation Lab

END

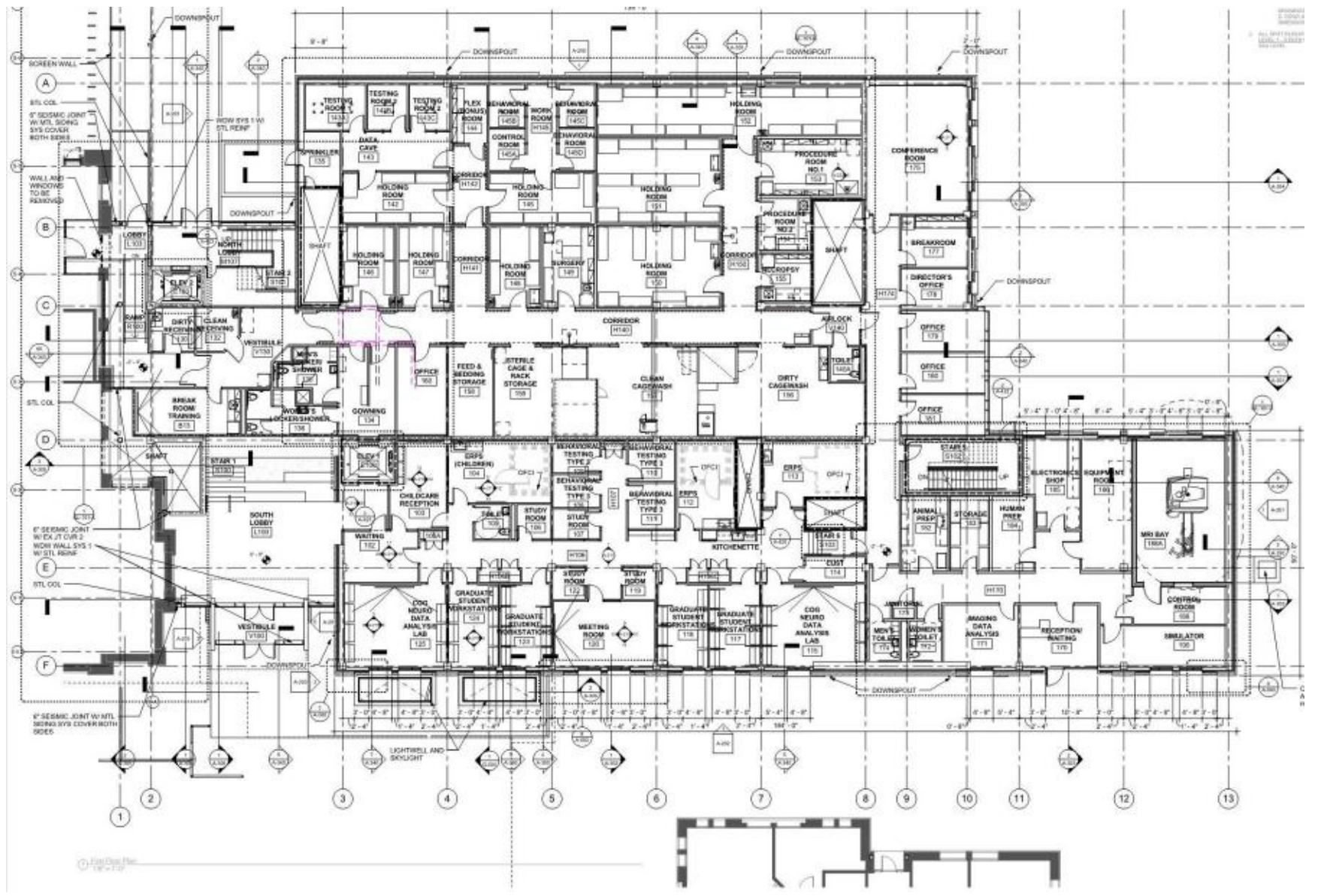


Up & Over Looking West

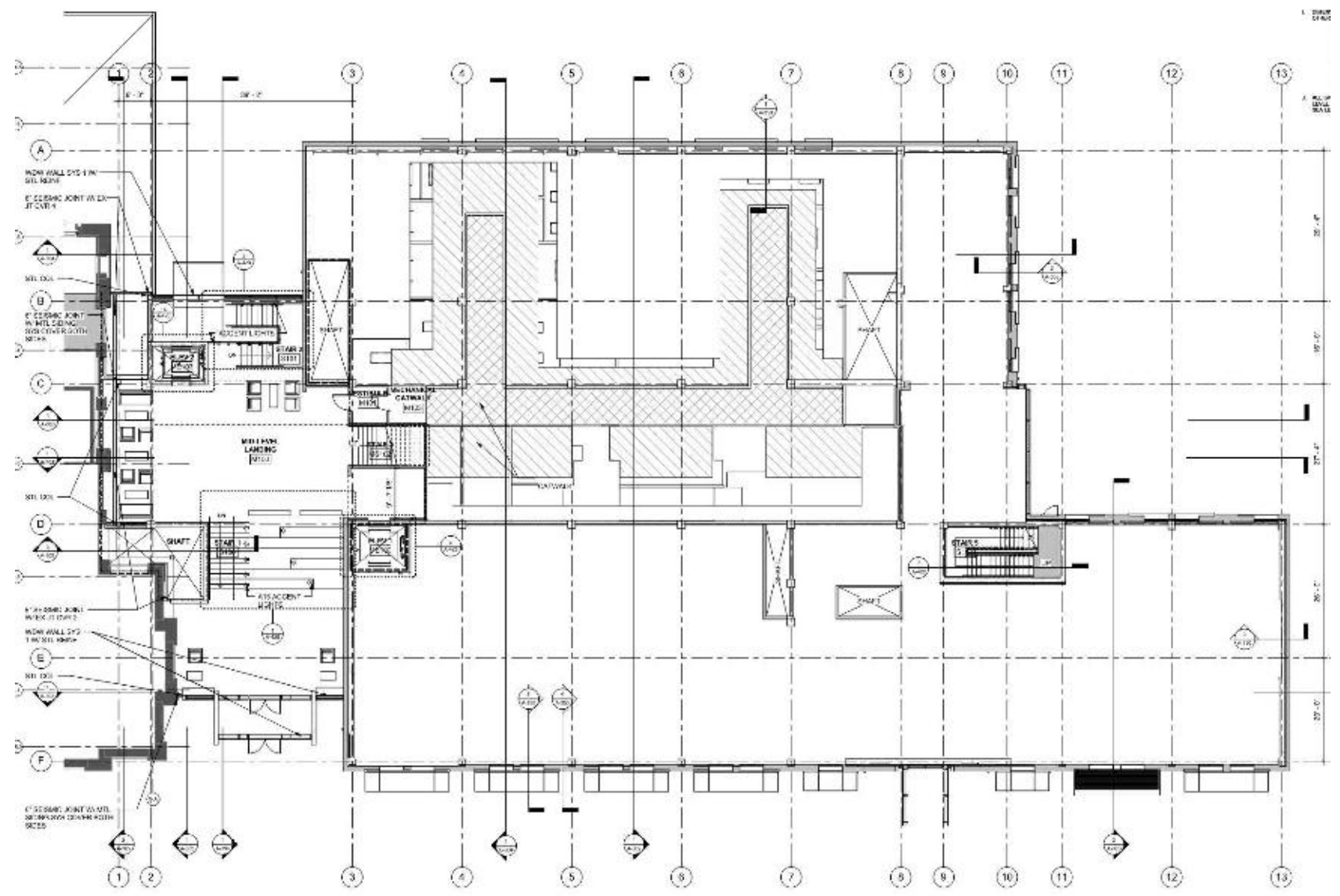


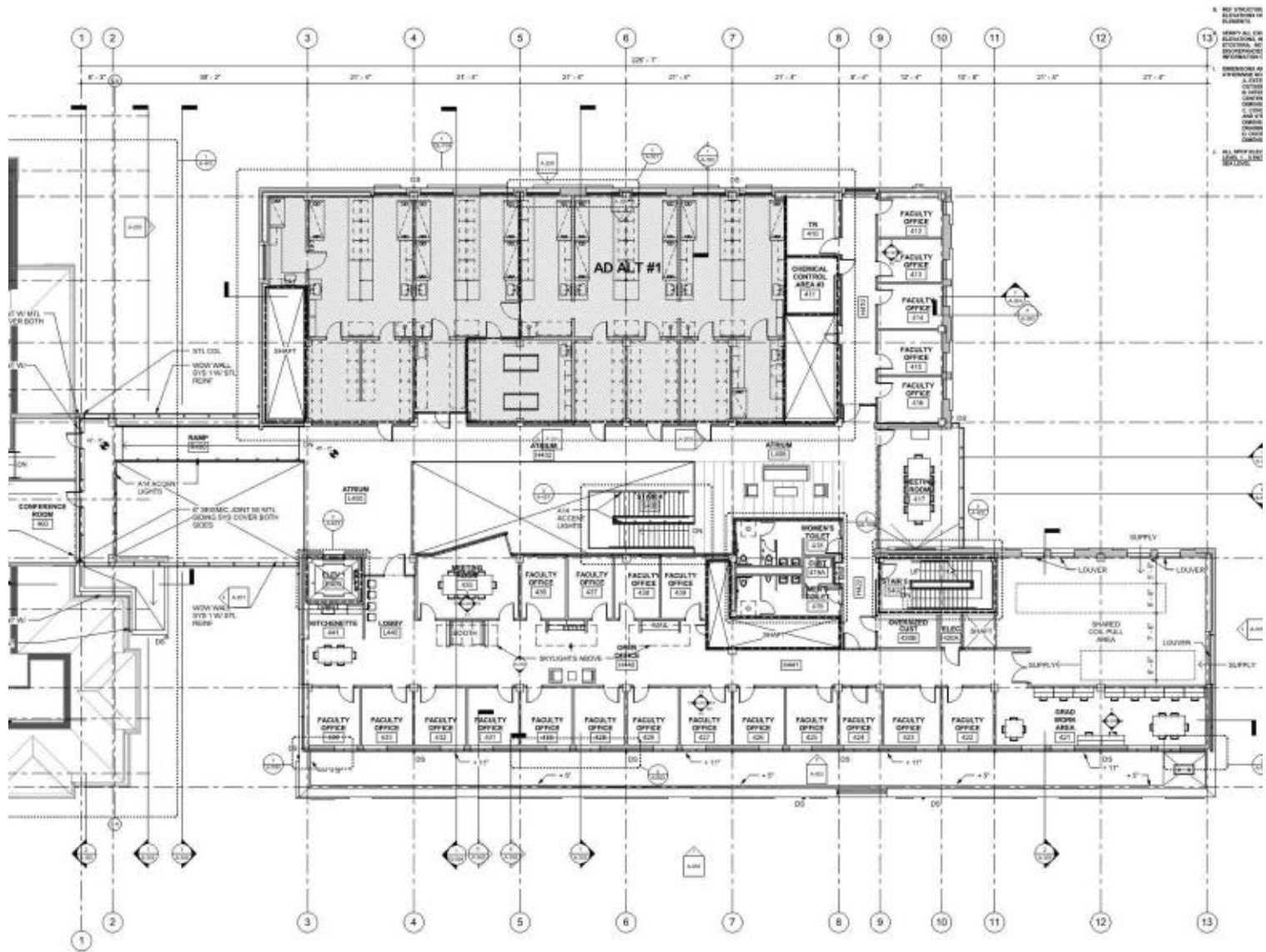
Atrium Looking South

SHEET NO. 1000-4
 ALL DIMENSIONS
 UNLESS NOTED
 OTHERWISE

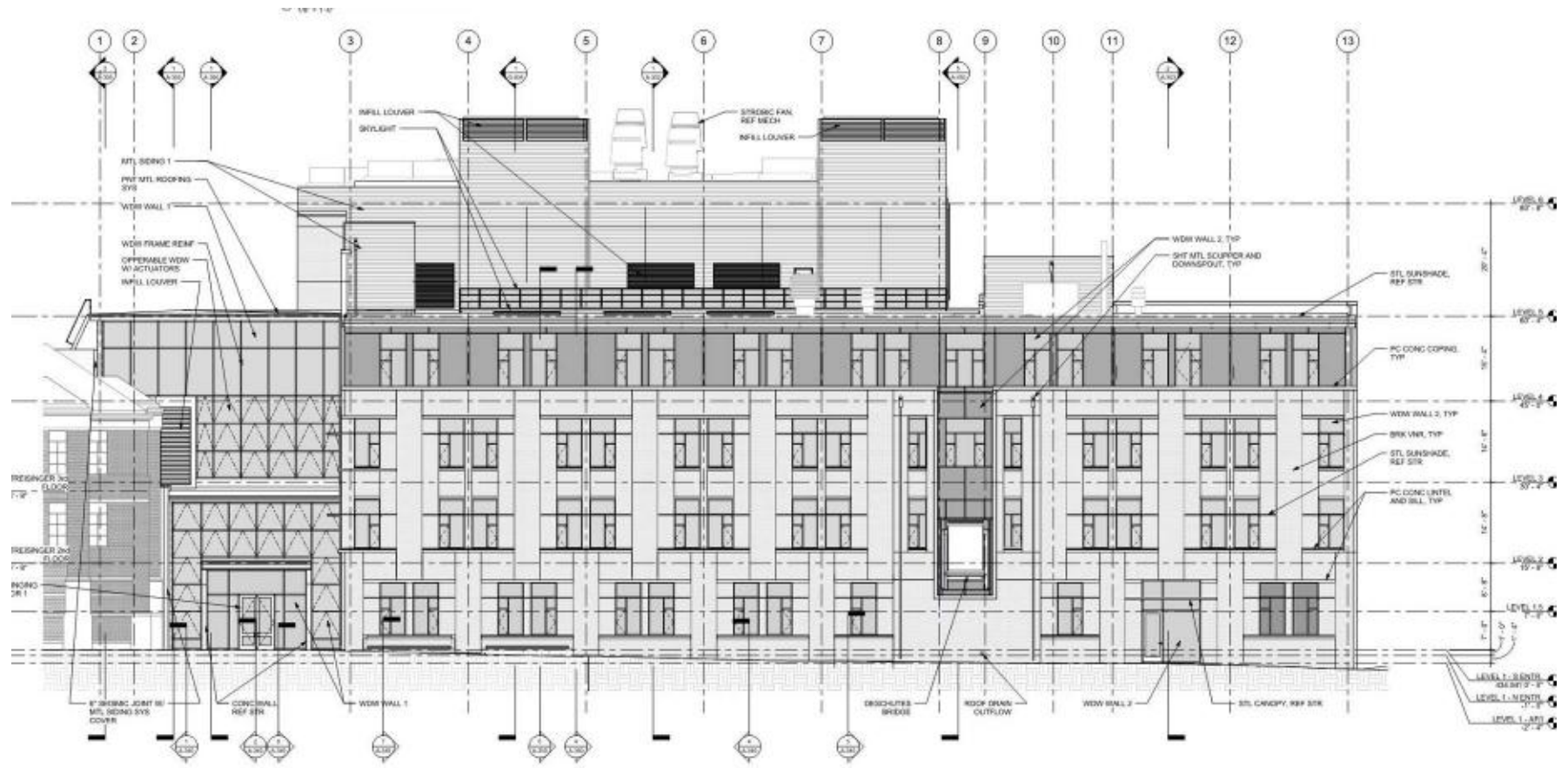


File/Draw File
 100-100





- 1. SEE SPECIFICATIONS FOR EQUIPMENT ELEMENTS.
- 2. VERIFY ALL DIMENSIONS, INCLUDING, BUT NOT LIMITED TO, ELEVATIONS, AND DIMENSIONS OF WORKING SURFACES.
- 3. DIMENSIONS ARE GIVEN AS APPROXIMATE UNLESS NOTED OTHERWISE.
- 4. OFFICE & WORK AREA DIMENSIONS ARE TO FACE UNLESS NOTED OTHERWISE.
- 5. ALL WORK SHALL BE IN ACCORDANCE WITH THE SPECIFICATIONS.



1 SOUTH ELEVATION
1/8" = 1'-0"

